

Together We Grow Excellence

WOODLAND PUBLIC SCHOOLS COMMUNITY REPORT 2024-25



Preparing students with
the knowledge, skills, and
confidence for careers,
college and life.



Together, we grow
excellence; for every
child, every day.

READY FOR THE FUTURE

At Woodland Public Schools, our commitment to families is simple: every student will graduate prepared for success in college, career and life.

Our College, Career and Life Ready framework ensures students build academic strength, explore career options, and develop the life skills needed to pursue their ambitions confidently.

Learn more by visiting our website: woodlandschools.org/together



SCAN ME!



College Ready

College Ready means students have the academic preparation to pursue a technical program, two-year college or four-year university.



Career Ready

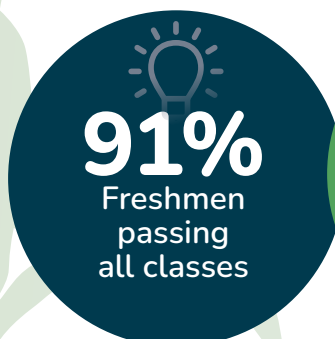
Career Ready means students have explored career options, gained practical experience, and have ample opportunity to build meaningful skills.



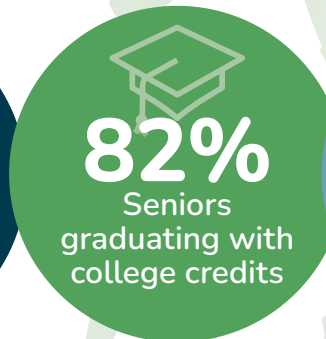
Life Ready

Life Ready means students are prepared to engage in civic responsibilities, and contribute positively to the Woodland community and beyond.

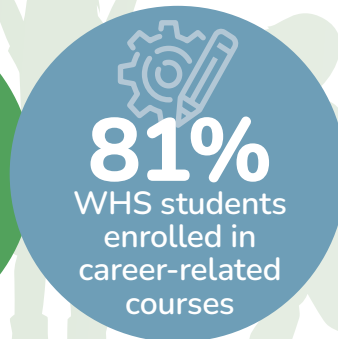
EDUCATIONAL EXCELLENCE (2024-25 DATA)



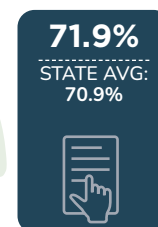
STATE AVG: 71.9%



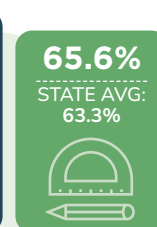
STATE AVG: 70.2%



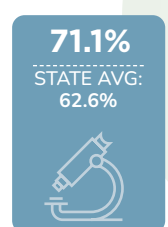
Woodland's State Assessment Results



ELA



MATH



SCIENCE

Students showing Foundational Grade-Level Knowledge and Skills or Above (Spring '25)

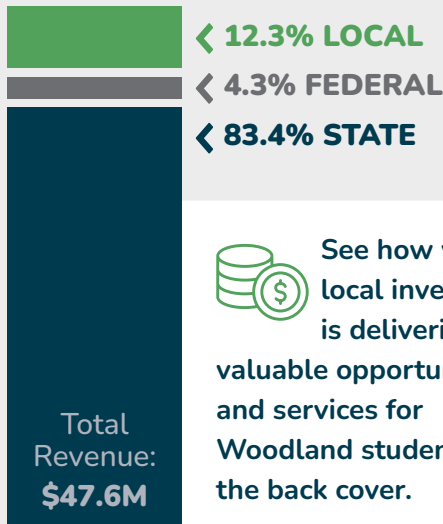
FISCAL RESPONSIBILITY



We are committed to responsible stewardship through trusted and transparent fiscal management. Every dollar used in Woodland Public Schools directly supports student learning, safety and opportunity. Our goal is transparency. We work in partnership with families and community members to ensure funds align directly with student outcomes.

2024-25 FINANCIALS

REVENUE SOURCES

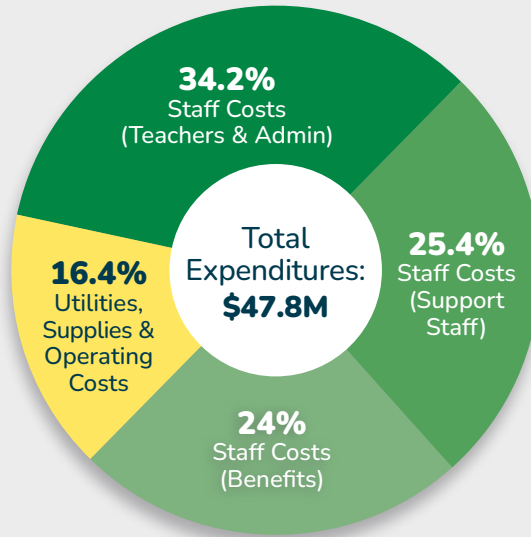


See how your local investment is delivering valuable opportunities and services for Woodland students on the back cover.

HOW FUNDS ARE SPENT



368 staff educate and support 2,468 students.



In the 2024–25 school year, expenditures exceeded revenues as the district navigated the expiration of its EP&O levy. Thanks to voter approval of the current levy and careful budget management, the district has significantly reduced its reliance on fund balance reserves.

WOODLAND'S PER PUPIL FUNDING



State Per Pupil Average: \$19.3K

WPS Actual Per Pupil: \$16.9K

OSPI reports Woodland's per-pupil cost as \$19.4K.

That figure includes transportation funding for the full KWRL bus cooperative, which Woodland manages for Kalama, La Center, Ridgefield and Woodland.

Excluding cooperative transportation funding, Woodland's actual per-pupil cost is \$16.9K.

Learn more at woodlandschools.org/together

Nondiscrimination Statement: Woodland Public School District does not discriminate in any programs or activities on the basis of sex, race, ethnicity, creed, religion, color, national origin, immigration or citizenship status, age, veteran or military status, sexual orientation, gender expression, gender identity, homelessness, disability, neurodivergence, or the use of a trained dog guide or service animal and provides equal access to the Boy Scouts and other designated youth groups. The following employees have been designated to handle questions and complaints of alleged discrimination: Vicky Barnes, Title IX Officer, Civil Rights Coordinator, Gender Inclusive Officer, and Affirmative Action Officer, barnesv@woodlandschools.org, (360) 841-2702; Jake Hall, 504 Coordinator, hallj@woodlandschools.org, (360) 841-2725



Woodland Public Schools
 800 Second Street
 Woodland, WA 98674
 woodlandschools.org



In Woodland, local levy funds support programs and services for students, including:



**Athletics,
Arts & Clubs**



**Safety, Security
& Maintenance**



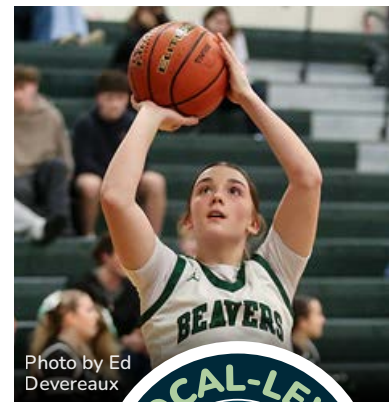
Technology



Transportation



Staff Positions
 (unfunded or not
 fully funded by the state)



Thank you, Woodland voters.

