

November 25, 2019

Dear School Board Applicant:

Thank you for your interest regarding the Woodland School District school board vacancy. Appointment is for a period from February 10, 2020 through November 2021. If the appointee wishes to remain on the board, s/he will run for re-election to fill the unexpired term, which is November 2021.

Director Area 5 represents a large geographic area on the eastern portion of the Woodland School District. The pages following show the detail of the entire director district, as well as its western boundary. A map of Director Area 5 follows this page.

A short application form is provided. It is important that you also submit a letter of interest identifying your background, as well as the skills, experiences and values you would bring to the school board if appointed.

Applications are due in the district office by 4 pm, Friday, January 17th, 2020. Interviews for candidates with the entire school board are set for Monday, January 27th, 2020. Interview schedule depends upon the number of candidates applying. Following interviews, the new board member will be appointed. The appointee will take the oath of office and be seated during the regular meeting on February 10th.

Sincerely,



Michael Green, Superintendent



WOODLAND
Public Schools
*Preparing all students for
Career, Life & College*

800 Second Street » Woodland, WA 98674
T 360.841.2700 » F 360.841.2701
www.woodlandschools.org

Woodland Public Schools is an Equal Opportunity Employer

Woodland School District No. 404
School Board Appointment
Candidate Information

Name: _____

Home Address: _____

Home Phone: _____

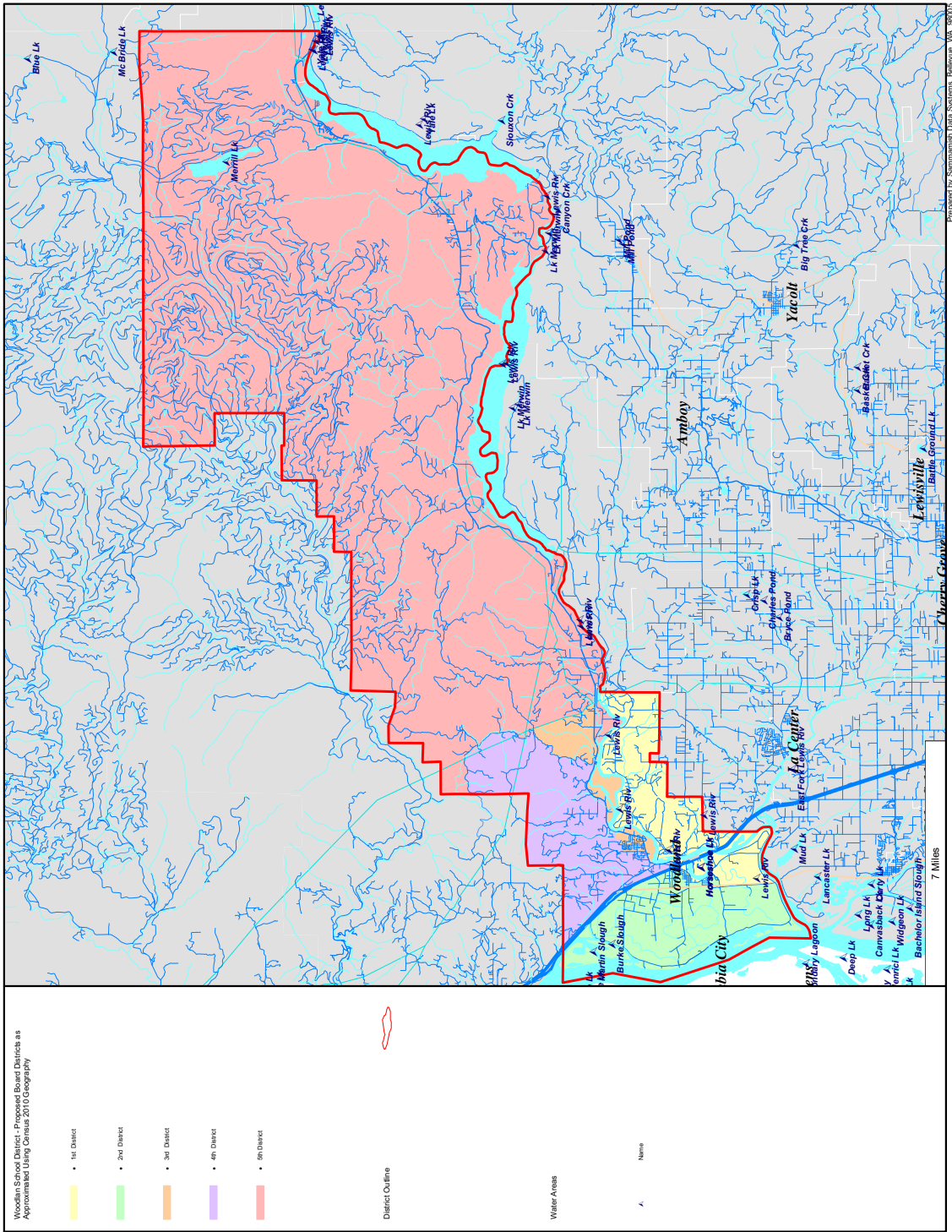
Email: _____

I LIVE IN DIRECTOR DISTRICT NO. 5

I AM A REGISTERED VOTER

I certify that the above information is correct:

Signature _____ Date: _____



Wicomico School District - Proposed Bound Districts as Approximated Using Current 2010 Geography

- 1st District
- 2nd District
- 3rd District
- 4th District
- 5th District

District Outline



Water Areas

Name

7 Miles

Woodlan School District -
Proposed Board Districts
as Approximated Using
Census 2010 Geography

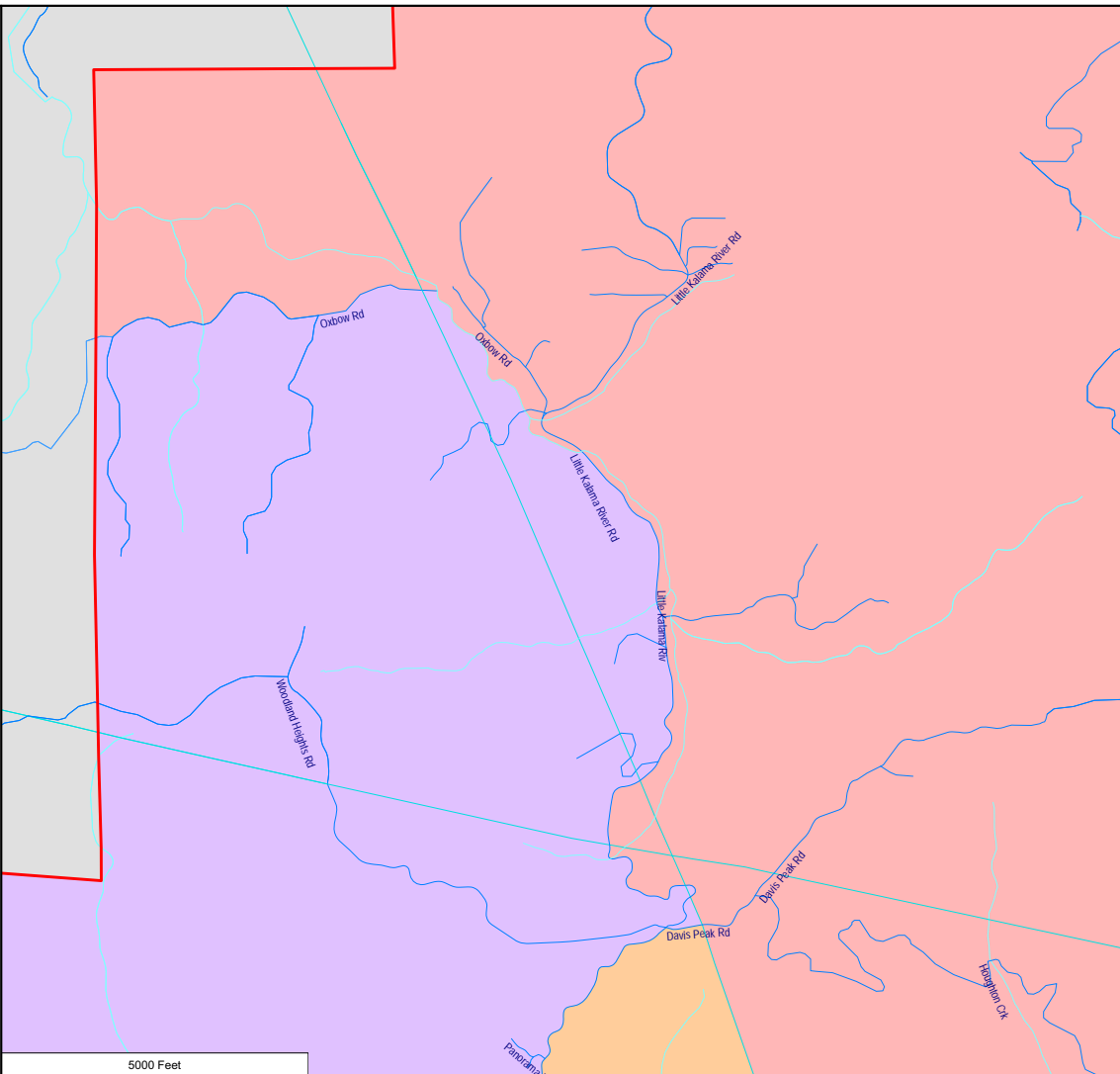
- 3rd District
- 4th District
- 5th District

City Limits

District Outline

Water Areas

Name



Woodlan School District -
Proposed Board Districts
as Approximated Using
Census 2010 Geography

- 1st District
- 3rd District
- 4th District
- 5th District

City Limits

District Outline

Water Areas

Name

