

# WOODLAND MIDDLE SCHOOL

March 2025

## 3 MAR. MON

- 4 – 5pm HOME Girls 7/8th Basketball vs View Ridge Middle School - Blended Blue
- 4 – 5pm HOME Girls 7th Basketball vs View Ridge Middle School
- 5 – 6pm HOME Girls 7/8th Basketball vs View Ridge Middle School - Blended Orange
- 5 – 6pm HOME Girls 8th Basketball vs View Ridge Middle School

## 5 MAR. WED

- 4 – 5pm Girls 7th Basketball @ Jemtegaard Middle School
- 5 – 6pm Girls 7/8th Basketball @ Jemtegaard Middle School - Blue
- 5 – 6pm Girls 8th Basketball @ Jemtegaard Middle School
- 6 – 7pm Girls 7/8th Basketball @ Jemtegaard Middle School - Gold

## 10 MAR. MON

- 4 – 5pm Girls 7/8th Basketball
- 4 – 5pm HOME Girls 7th Basketball vs King's Way Christian School
- 5 – 6pm HOME Girls 8th Basketball vs King's Way Christian School

## 12 MAR. WED

- 4 – 5pm HOME Girls 7/8th Basketball vs La Center Middle School
- 4 – 5pm HOME Girls 7th Basketball vs La Center Middle School
- 5 – 6pm HOME Girls 7/8th Basketball @ View Ridge Middle School - Blended Orange
- 5 – 6pm HOME Girls 8th Basketball vs La Center Middle School

## 13 MAR. THU

- 6:30 – 8:30pm School Board Meeting

## 17 MAR. MON

SPIRIT DAY: GREEN DAY

## 24 MAR. MON

- 3 – 6pm Girls 7/8th Golf @ La Center Middle School

## 25 MAR. TUE

- K-12 Early Release (Day 1/4)
- Middle School Choir Festival- LCRMEA - Location TBD 8:45am – 12:45pm

## 26 MAR. WED

- K-12 Early Release (Day 2/4)

## 27 MAR. THU

- K-12 Early Release (Day 3/4)
- 6:30 – 8:30pm School Board Meeting

## 28 MAR. FRI

- K-12 Early Release (Day 4/4)

Qtr 3 ends

## 31 MAR. MON

Spring Break (Day 1/5)



## SPRING SPORTS REGISTRATION IS OPEN



BOYS/GIRLS TRACK - 7TH & 8TH GRADE TEAM (BOYS & GIRLS COMBO)

GIRLS GOLF - 7TH & 8TH GRADE GIRLS

*Please make sure your students physical is current. Physicals are good for two years.*



For more information regarding future dates and sporting events check out our WMS Website Calendar [Here!](#)

## Spring Break March 31st-April 4th

### WALK-IN SPRING CONFERENCES

March 25th

1:00 – 3:30

4:30 – 7:15

March

26th & 27th

1:00 – 3:30



### NOT REGISTERED FOR BUS TRANSPORTATION?

**KWRL**

360.841.2023

[info@kwrl.org](mailto:info@kwrl.org)

Special Needs

360.841.2035

For Spanish

360.841.2036



### District Registrar

Deena Capen

360.841-2707

[registrar@woodlandschools.org](mailto:registrar@woodlandschools.org)

Lunes - Viernes

8:00 – 4:00

School nurse

Shayla Miller

360.841.2887

[millersh@woodlandschools.org](mailto:millersh@woodlandschools.org)



Attendance

Heather Finn

360.841.2852

[finnh@woodlandschool.org](mailto:finnh@woodlandschool.org)



Sports

Maria Betancourt

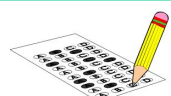
360.841.2853

[betancom@woodlandschool.org](mailto:betancom@woodlandschool.org)



Applications for free and reduced lunches are available in the office or found online!

<https://woodlandschooldistrict.nutrislice.com/menu/woodland-middle-school/lunch/2024-08-23>



## SBA TESTING MAY 12TH - 30TH



# Annual Spring Book Fair

Our annual Spring Book Fair will be held **March 24th - 28th** in our library. It will be open during school, and in the afternoon and evening during conferences.

This is a great opportunity to purchase books and support our school at the same time. Visit us online at [www.scholastic.com/bf/wms](http://www.scholastic.com/bf/wms) to preview titles, set up an eWallet, and purchase from an expanded selection of titles Pre-K through adult.

Online shopping runs **March 24th - April 6th**.



## March 18th



**5PM - 7PM**

*Disney's Alice in Wonderland JR. is playing at Woodland High School this year! This zany 60-minute musical, is based on the 1951 Disney film and the novels by Lewis Carroll. Fall down the rabbit hole with Alice as she navigates the curious world of Wonderland on her journey of self-discovery. Along her adventure, Alice encounters the ever-tardy White Rabbit, the grinning Cheshire Cats, a cool Caterpillar, the wacky Mad Hatter, a temperamental Queen, and many more beloved Wonderland characters in this charming updated retelling of the classic Lewis Carroll stories. Adapted especially for young performers, the musical includes favorite songs from the Disney canon such as "I'm Late," "The Unbirthday Song," and "Painting the Roses Red," in addition to music from the 2010 Tim Burton live-action film. Whether this is your first experience with Alice or your hundredth, you'll lose your head (and your heart) for Alice in Wonderland JR.!*



**Disney's Alice in Wonderland JR. is presented through special arrangement with and all authorized materials are supplied by Music Theatre International, New York, NY (212) 541-4684 [mtishows.com](http://mtishows.com).**

**Showtimes:**

**Friday, March 21st: 7:00 pm**

**Saturday, March 22nd: 2:00 pm and 6:00pm**

**Tickets are \$10.00 per seat\*\* - general admission seating- and can be purchased here:**

**<https://wa-woodland-lite.intouchrecepting.com/WMSDrama>**

**\*\*Toddlers and babies who can sit on laps do not need to have a ticket purchased .**





#### **When to stay home:**

- Fever of 100.4 degrees or higher
- Feels too sick to participate in school activities
- Needs fever or pain medication (like Tylenol or Motrin) to feel good
- Moderate to severe cough
- Shortness of breath
- Stomach pain
- Sore throat
- Diagnosed with COVID, flu, strep throat or pinkeye
- Vomiting
- Diarrhea
- New rash
- Bloodshot eyes or excessive discharge

If a student develops these symptoms during the school day, nurses will use their discretion to determine whether a student should be sent home.

#### **When to return to school following an illness:**

- 5 days following a COVID diagnosis if asymptomatic or symptoms are resolving (no fever, runny nose or productive cough)
- No fever for 24 hours without fever-reducing medications like Tylenol or Motrin
- Occasional cough
- Feels good enough to fully participate in school activities
- No vomiting or diarrhea for 24 hours
- 24-hours of antibiotics following a strep throat, pinkeye or ear infection diagnosis

## Reporting



## Absences

**If you need to report your child absent, you may do so any of the following ways...**

- Call the office at 360-841-2850 and leave a voicemail.
- Send a message through Talking Points.
- Email [finnh@woodlandschools.org](mailto:finnh@woodlandschools.org)

***Please include your students name, date and reason for absence.***

## WMS Office Hours

Monday 9:30am – 4:00pm

Tuesday – Friday 8:15am – 4:00pm



WMS Building Entry Students will enter through the commons. Monday 9:40am Tuesday – Friday 8:25am

## INVEST ED

Immediate help for students in need

Invest ED is a non-profit that provides students with immediate help when it is needed most, our school utilizes the funds they provide to help students in need throughout the school year. If you would like to learn more or donate please click [here](#).

*This year alone we were able to help over 20 students with the funds they provided us.*