



Beaver News

January 2026

Volume 6, Issue 5

Forecasting Season

Over the next 6 - 10 weeks, staff will begin working with the 8th through 11th graders on forecasting for next year's classes. It seems like it comes earlier every year, but really, it doesn't. Time just moves more quickly every year!

Here are the things your students will be doing over the coming weeks to prepare for next year's course scheduling. In mid February, teachers will begin preparing course recommendations for students by subject area. In many cases, students will be involved in creating those course recommendations. In late February, students will work with their GRIT teachers to identify potential courses for next year. Shortly before spring break, students will discuss their identified course plans with parents and guardians as a part of their Student Led Conferences.

What's Next for Our Seniors

As our seniors approach graduation, the question of "What's next?" is on everyone's mind—students and parents alike. The good news is that today's career landscape offers more pathways to success than ever before, moving beyond the traditional single route.

For many, two-year and four-year college degrees remain a valuable choice, offering specialized knowledge and a broad foundation for future leadership roles. However, it is essential to explore fields with high future demand, such as technology, healthcare, and green energy. As two examples, job demand in AI and big data analysis are expected to increase by 7.5% next year and home health and personal care are expected to add 740,000 jobs by next year.

Another increasingly vital, and often overlooked, path is skilled trades. Careers in plumbing, electrical work, welding, and HVAC offer excellent salaries, high demand, and often a faster, more affordable route through vocational schools or apprenticeship programs. These hands-on roles are critical to the economy and provide immediate entry into the workforce. Construction occupations are projected to grow faster than average and several trades (including those listed above) are facing a "crisis level" shortage.

What's Next cont.

Immediate employment is also a viable start. Entry-level positions and internships provide invaluable real-world experience, allowing students to test out different industries before committing to further education. Companies across sectors like retail, logistics, and hospitality often offer training and tuition reimbursement programs, effectively making your first job a paid learning experience.

The key to navigating all these options is focusing on **transferable skills**. No matter the path—college, trades, or work—skills like critical thinking, communication, problem-solving, and adaptability are highly prized by all employers. Encourage your student to reflect on their passions and strengths. Success isn't defined by a single destination, but by choosing the path that aligns with their personal goals and embracing continuous learning. The opportunities are limitless.

Winter Sports Update

Winter Sports are entering the second half of league play. Please consider supporting our programs as our seniors wind down their Winter sports careers. Here are some of the upcoming [home](#) events. For updated game information see [Arbiter Sports](#)

Boys Basketball: 1/9, 1/20, 1/29

Boys & Girls Wrestling: 1/13, 1/24 (boys), 1/27

Girls Basketball: 1/14, 1/16, 1/23, 1/28

Dance & Drill: Home Competition (Senior Night)



Helpful Information Links

ATHLETICS: <https://www.woodlandschools.org/page/95>, <https://www.woodlandschools.org/page/48>

- For updated information and sport schedules: <https://www.arbiterlive.com/Teams?entityId=26210>, <https://whsbeavers.com/>

BELL SCHEDULE: <https://www.woodlandschools.org/page/6812>

CELL PHONE POLICY & Personally Owned Electronic Devices:

COMMUNITY RESOURCES: <https://www.woodlandschools.org/page/59>, <https://www.woodlandschools.org/page/203>

- Latino & Spanish speaking families: <https://www.woodlandschools.org/page/341>

COUNSELING: <https://www.woodlandschools.org/page/99>

- Career Pathways <https://sites.google.com/woodlandschools.org/whs-curriculum-handbook/pathways?authuser=0>
- Financial Aid: <https://studentaid.gov/h/apply-for-aid/fafsa>, <https://www.woodlandschools.org/page/108>

DIGITAL RESOURCES: <https://www.woodlandschools.org/page/116>

FOOD SERVICES: <https://www.woodlandschools.org/page/45>

FOOD MENU: <https://woodlandschooldistrict.nutrislice.com/menu/woodland-high-school>

HEALTH DESK: <https://www.woodlandschools.org/page/21>

- Parents - If your child has a life-threatening health condition that requires rescue medication, medication orders and an updated care plan should be in place. If you have any questions you can reach our district nurse, Kerri Six at sixk@woodlandschools.org or 360-841-2837.

SENIORS:

- Here is a link to the Senior Page on our District Website <https://www.woodlandschools.org/page/124>

TECH SUPPORT: <https://www.woodlandschools.org/page/195>, <https://www.woodlandschools.org/home-tech-support>

YEARBOOK & PICTURES: <https://www.woodlandschools.org/page/117>

TECHNOLOGY

As part of our ongoing commitment to student safety and well-being, Woodland Public Schools uses a monitoring system on district-issued devices. This software can detect searches related to self-harm or unsafe activity. If this happens after school hours, parents/guardians may automatically receive a notification via email. If you receive an alert, please know the suicide prevention hotline number is 988 and available 24 hours a day.

2025 - 2026 YEARBOOK COST

- Now through January 2026 - \$50
- February through April 2026 - \$55
- May 2026 (wait list) - \$60
 - Your name will be put on a wait list, you do not pay in advance. Once yearbooks come in and we have a book for you, then you will pay before receiving the book.
- NO Engraving Available

Check, cash, or card in the WHS office, or online through InTouch.

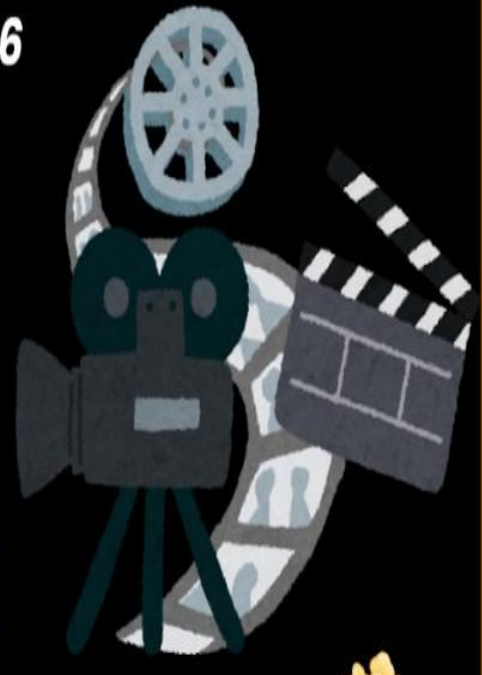
HOLLYWOOD

2026 Tolo

Saturday, February 7th, 2026
Woodland High School

Venue opens at 7:30pm
Ends at 10:00pm

\$25 in advance
\$30 at the door



DETAILS

- No entry after the start of the dance.
- If you drive or get picked up and choose to leave early, you CANNOT return to the dance.
- No refunds. \$25 per ticket, per person. Sales will be announced at the HS, sold during lunch & sold at the door for \$30 (at the door - cash or check to WHS only).
- No snacks or drinks will be sold. You can bring your own, they will be held and inspected at coat check, and monitored when in use.
- Semi Formal.

Woodland High School Guest Dance Pass

To: Students and guests planning to attend a Woodland High School dance.

This dance is a school-sponsored activity. School and district policies will be fully enforced, especially those related to drugs, alcohol and vaping. Anyone found to be under the influence or in the possession of drugs, alcohol or vaping paraphernalia will be referred to the local police as required by state law. Suspension from school is automatic. You and your guest will need to follow all school policies and *both* of you will be asked to leave the dance if *either* of you don't follow the rules.

My signature indicates that I fully understand these rules and that the information will be shared with my date. This pass must be turned in to purchase a ticket to the dance.

WHS student's name and grade: _____

WHS student's signature: _____

Parent's signature: _____

Guest's name: _____

Guest's school: _____

Guest's grade and birthdate: _____

Guest's home phone: _____

Guest's parent's signature: _____

Each guest must be accompanied by a student from Woodland High School. One guest allowed per WHS student. All persons attending must show valid picture identification to be admitted to the dance. Guests must be at least 9th graders and no older than 20 years of age. Woodland High School has the right to refuse admittance to anyone.

This additional information is required for guests that are students at a school other than Woodland High School.

The student listed above is a student in good standing at our school. (S)he has had no significant behavioral or disciplinary issues while attending our school.

Signature of Activities Director / Asst Principal
School where guest student attends

Written name of Act. Director / Asst Principal

Work phone number: _____

Woodland High School Approval: _____
(Dr. Pearson or Mr. Lindsay)

Dance passes must be filled out in advance by the guest school and family before WHS will sign. They are in the HS office.

VERY IMPORTANT INFORMATION

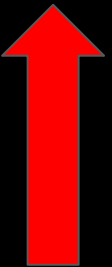
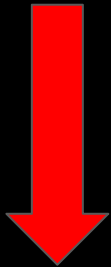
SENIORS - CLASS OF 2026

CAP AND GOWN ORDERING - through Herff Jones (below)

- You have been emailed.
- Info is posted on our Senior Information page see link below.
- Paper copies are available on the Senior Information counter in the front office.
- ANY QUESTIONS? See Sarah or Sheri in the front office.

HERFF JONES - CAP, GOWN, TASSEL, STOLE, ANNOUNCEMENTS & MORE!

- [Herff Jones Contact Information](#)
- [Herff Jones QR Code for Ordering](#)
- [Herff Jones Year at a Glance Information - what to expect](#) - please review this for important deadlines.



SENIORS ~ REMINDERS

- Check your school emails often.
- Tell your running start friends to check their Woodland High School email often.
- Check the website for current information.
 - Senior Information: <https://www.woodlandschools.org/page/124>
 - Yearbook & Pictures: <https://www.woodlandschools.org/page/117>

SAVE THE DATE!

Clark College Dental Hygiene

Free Children's Dental Health Day



Saturday, Feb. 7, 2026
Open to children 4-17 years.



Appointment scheduling begins
Monday, Dec. 1.
Call 360.992.2158 to make an
appointment.



The event will take place at the Clark
College Dental Hygiene Clinic in
Vancouver. Accommodations for children
with special needs will be available.

Services include:

- Dental exams
- Teeth cleanings
- Dental X-rays
- Sealants
- Fluoride
- Select emergencies

Scan the QR code for tips
on preparing your child to
visit the dentist!



shorturl.at/102s1



MORE DETAILS COMING SOON



CLARK COUNTY WASHINGTON
PUBLIC HEALTH



Access to
Baby & Child
Dentistry™



ripcity
runs deep



PORTLAND
VS.
SACRAMENTO

SUNDAY, APR. 12
5:30 PM



WOODLAND
TRACK &
FIELD NIGHT

Come out and support the Portland Trail Blazers as they take on the Sacramento Kings on Sunday, April 12th! Enjoy exclusive discounted tickets with friends, family, and teammates from Woodland Track & Field. It's a great night to celebrate the season and experience the excitement of NBA basketball together at Moda Center!

VISIT:
[Blazersgroups.com](http://Blazersgroups.com/woodland)
[/woodland](http://woodland)

ORDER DEADLINE:
Mon, Mar. 16

CONTACT:
CHANDLER MORSE
503.963.3946
chandler.morse@trailblazers.com

STARTING AT \$23

The District does not sponsor this event and the District assumes no responsibility for it. In consideration of the privilege to distribute materials, the Woodland School District shall be held harmless from any cause of action filed in any court or administrative tribunal arising out of the distribution of these materials, including costs, attorney's fees and judgments or awards.

School Board Meetings - January 8 at 6:30 pm & 23 at 7:30 pm, 2026
ALL TEACHERS CAN BE REACHED BY email using the following format: first seven letters of their last name & first initial of first name
@woodlandschools.org (Ex: pearsonp@woodlandschools.org)
Woodland High School 1500 Dike Access Road Woodland, WA 98674-9498,
Main Line 360-841-2800 Fax: 360-841-2801
Dr. Phillip Pearson, Principal ~ Michael Lindsay, Assistant Principal

Woodland Public School District does not discriminate in any programs or activities on the basis of sex, race, creed, religion, color, national origin, age, veteran or military status, sexual orientation, gender expression, gender identity, disability, or the use of a trained dog guide or service animal and provides equal access to the Boy Scouts and other designated youth groups. The following employees have been designated to handle questions and complaints of alleged discrimination: Vicky Barnes, Title IX Officer, Civil Rights Coordinator, and Affirmative Action Officer, 800 Second St. Woodland, WA 98674, barnesv@woodlandschools.org, (360) 841-2702 Jake Hall, 504 Coordinator, 800 Second St. Woodland, WA 98674, hallj@woodlandschools.org, (360) 841-2725. You can report discrimination and discriminatory harassment to any school staff member or to the district's Civil Rights Coordinator, listed above. You also have the right to file a complaint. For a copy of your district's nondiscrimination policy and procedure, contact your school or district office or view it online at www.woodlandschools.org.

District Vision Statement: Woodland Public Schools, in partnership with its community, will create a PreK-12 system that serves and supports ALL children and ensures EACH child has FULL access to, is engaged in, and obtains an excellent education that prepares them for responsible citizenship and a future of adaptability and success in life and their chosen endeavors.

District Calendar: <https://www.woodlandschools.org/storage/file/44/2023-24%20Calendar%20Final.pdf>
Woodland High School Calendar of Events: <https://www.woodlandschools.org/page/92>



Woodland Beaver Boosters

woodlandboosters@gmail.com

Like us on FB @ Woodland Beaver Boosters,

Instagram @ WHS Beaver Booster Club

Twitter - Woodland HS Beaver Booster Club

@beaver_hs

The District does not sponsor this event and the District assumes no responsibility for it. In consideration of the privilege to distribute materials, the Woodland School District shall be held harmless from any cause of action filed in any court or administrative tribunal arising out of the distribution of these materials, including costs, attorney's fees and judgments or awards.

JANUARY 2026
NON-SCHOOL DAYS

19 - MLK Jr. Day holiday
30 - Semester Break Day (end
of 1st semester)